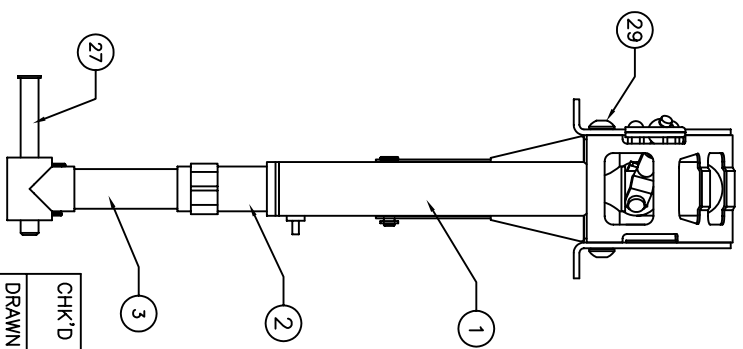
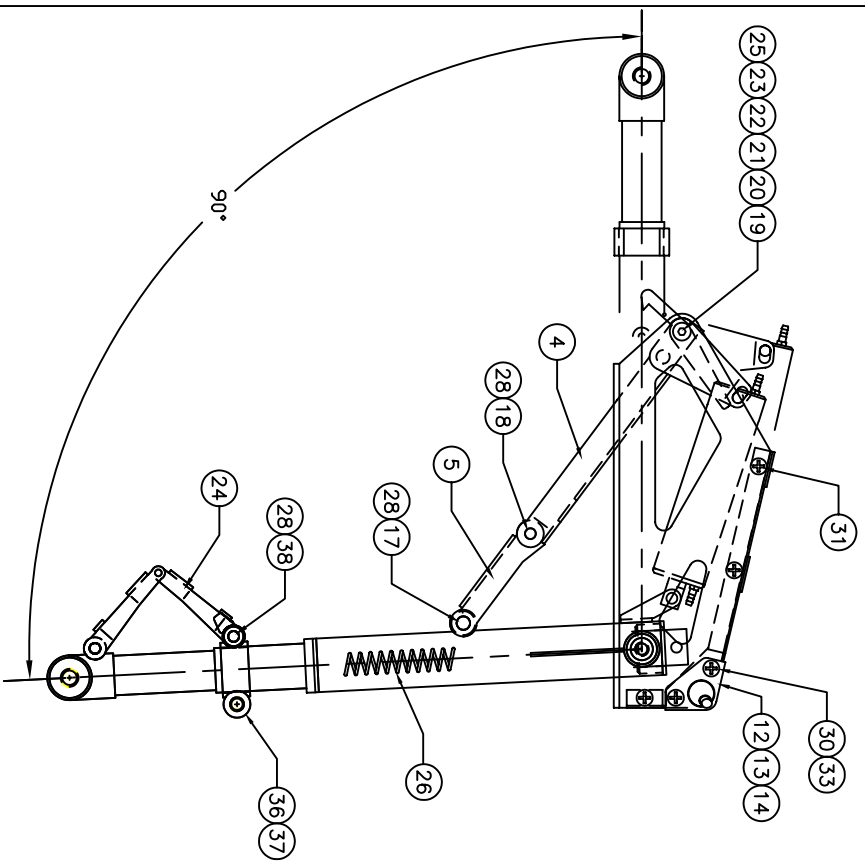
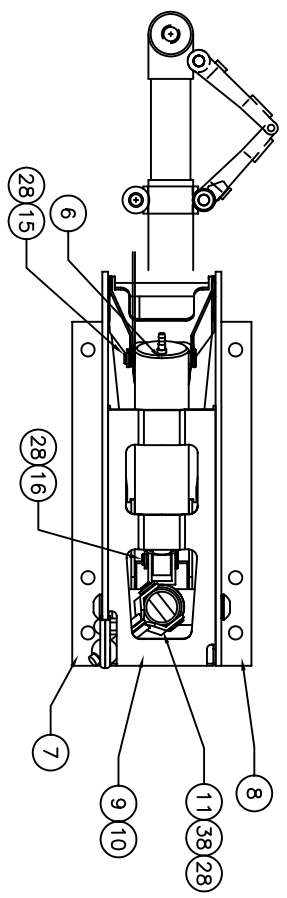


** THIS IS YOUR SPARE PARTS LIST. SAVE FOR FUTURE REFERENCE, ORDER BY PART NUMBER. CURRENT PRICES WILL BE QUOTED.**

NOTE: AXLE BAG ASSEMBLY FOR 150-HD8
145-142A= INCLUDES AXLE AND SET SCREW




SPARE PARTS LIST

QTY	ITEM	DESCRIPTION	ASS'Y/PART #
1	1	TRUNION ASSEMBLY	150-504A
1	2	ROTATION STRUT	150-530A
1	3	OLEO RAM ASSEMBLY	151-106A
1	4	LIFT YOKE ASSEMBLY	162-106A
1	5	LIFT LINK	150-028M
1	6	CYLINDER ASSEMBLY	150-108A
1	7	SIDE FRAME (RH)	150-507A
1	8	SIDE FRAME (LH)	150-508A
1	9	SPACER BRACKET (RH)	150-050M
1	10	SPACER BRACKET (LH)	150-051M
1	11	CAM FOLLOWER	150-106A
1	12	CAM BALL	150-032M
1	13	CAM BALL FRAME (RH)	150-047M
1	14	CAM BALL FRAME (LH)	150-049M
1	15	CYLINDER CLEVIS PIN	150-012M
1	16	ACTUATOR CLEVIS PIN	150-018M
1	17	LIFT LINK CLEVIS PIN	150-010M
2	18	LIFT YOKE CLEVIS PIN	150-033M
1	19	LIFT YOKE PIVOT PIN	150-004M
1	20	LATCH SPACER	150-001M
1	21	LATCH SPACER	150-005M
1	22	LATCH PAWL	150-003M
1	23	LATCH SPRING	102-008M
1	24	TORQUE LINK ASSEMBLY	150-107A
2	25	#4-40 x 3/16 BHMS	1022F
1	26	SPRING	151-019P
1	27	AXLE BAG ASSEMBLY	145-142A
7	28	RETAINING RING	1039F
2	29	#10-32 BHMS	1021F
2	30	#4-40 x 1/4 PPHMS ZN	1047F
8	31	#4-40 FHMS	1026F
2	33	#4-40 HEX NUT	1035F
1	36	TORQUE LINK MOUNT (RH)	150-112A
1	37	TORQUE LINK MOUNT (LH)	150-113A
3	38	CAM PIN	150-002M

906-025M

FACTORY REPAIR FEE= \$25.00 PLUS PARTS

CHK'D BY			MFG. INC. 625 N. 12TH ST. ST. CHARLES, IL (630)584-7616
DRAWN BY	J. REHAK		
DATE	6-14-02		
MODEL No.	150HD8	TITLE	HEAVY DUTY #150 RETRACT 8" STRAIGHT STRUT